

## UniCon LeoConnect Client

UniCon LeoConnect is a client software package for the Leostream Connection Broker of Leostream Corp.

Please consult <http://www.leostream.com> for details relating Leostream Connection Broker.

### **1. Requirements**

- eLux NG BaseOS 1.43-3 and higher; eLux RL
- A Virtual Desktop Application must be defined in the eLux starter or via Scout.
- Scout V9.6.0 and higher (optional).

### **2. General Remarks**

After Login and the successful registration at a Leostream Connection Broker LeoConnect displays to the user a list of available Hosted Desktops. From this list the user is to select those Hosted Desktops, which a connection is to be established to. After this LeoConnect requests the necessary RDP connection data from the selected Leostream Connection Broker and then starts the RDP sessions.

### **3. Automatic Login Mode**

If the fields "user name", "password" and "server" in the application definition dialog of "Virtual Desktop" are filled with data LeoConnect registers automatically at the pre-selected Leostream Connection Broker and presents immediately after the start a list of available Hosted Desktops (Hosted Desktop dialog) instead of the Login dialog. If you want to login manually, leave a blank in one of the above mentioned fields when defining your Virtual Desktop application.

### **4. LeoConnect Login-Dialog**

This dialog will be displayed when:

- one of the fields "server", "user name" or "password" has been left blank when defining the application in the eLux starter or via Scout.
- an error occurred in which case a dialog will be shown with the error message.



Figure 1: LeoConnect Login Dialog

The button **Connect** will not be enabled until the fields "Username", "Password" and „Connection Broker“ have been filled, whereas the field "Connection Broker" corresponds to the field "Server" in Scout resp. the eLux starter. Clicking **Connect** LeoConnect will register at the Leostream Connection Broker and request a list of the available Hosted Desktops.

Clicking **Exit** closes LeoConnect, and all active RDP sessions to hosted desktops will be closed, too!

### 5. *LeoConnect Hosted Desktop Dialog*

This dialog shows a list of the virtual machines available to the user.

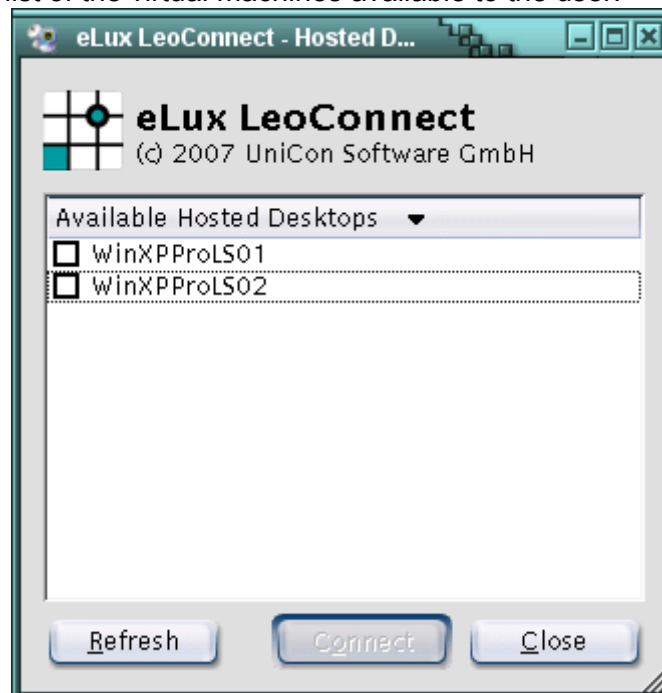


Figure 2: Hosted Desktop Dialog – This list offers two available hosted desktops

The user selects the preferred machines from the list and then clicks **Connect**. Subsequently the single RDP sessions to the selected hosted desktops are initiated, and the selected entries will be grayed in the list.

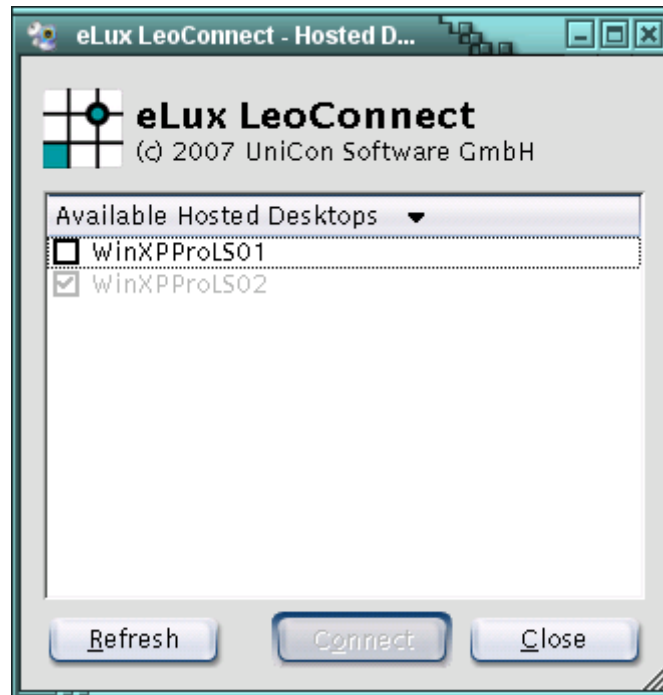


Figure 3: Hosted Desktop Dialog – includes a hosted desktop a connection exists to.

A click on **Refresh** will make a new request for the list of available "Hosted Desktops" at the Leostream Connection Broker.

**Connect** will not be enabled until at least one Hosted Desktop has been selected.

If LeoConnect is in the mode "automatic Login", LeoConnect and all active RDP sessions can be terminated by clicking **Close**. If no active Login has been set, **Close** will only close the Hosted Desktop dialog and return to the Login dialog. So far active RDP sessions will not be terminated.